



# **INSTALLING BLANKET STRAPS TO EYELETS ON A UNDERGROUND BLANKET BOX**



# CLIP INSTALLATION



## STEP 1

Place the pool blanket bubble side down (bubbles will be touching the water) then arrange the flat blanket straps along the blanket so that they can retract evenly along the blanket



## STEP 2

Count in 5 or so bubbles for hole placement.(around 7cm from edge)



## STEP 3

Use supplied punch and place a block of wood underneath to ensure a sharp hole is created



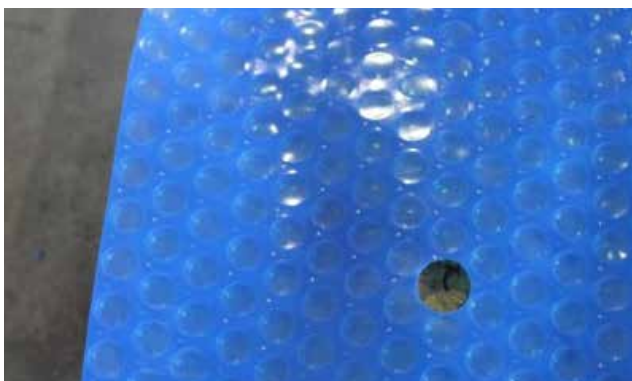
## STEP 4

Use a hammer to punch hole through the blanket



## STEP 5

This should be the end result



## STEP 6

Get plastic eyelet and split apart



### STEP 7

Place one on one side and the same on the reverse side of the blanket



### STEP 8

Once both ends are loosely together, hammer lightly to press together



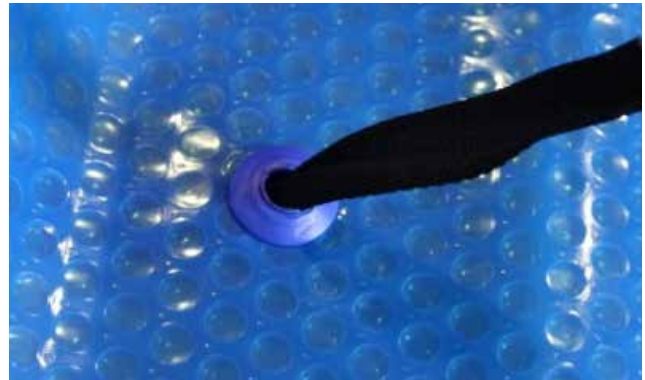
### STEP 9

Grab end of blanket strap and push together



### STEP 10

Push through back of hole



### STEP 11

Loop back and join to the black clip on the blanket strap.



### STEP 12

This is the end result







## CONTACT US

### MELBOURNE

Address: 27 Westwood Drive, Deer Park, Vic 3023  
Phone: (03) 9390 0700  
Email: [sales@sunlineaustralia.com.au](mailto:sales@sunlineaustralia.com.au)  
Web: [www.sunlineaustralia.com.au](http://www.sunlineaustralia.com.au)

### ADELAIDE

Address: 152 Frederick St, Welland SA 5007  
Phone: 0419 857 987  
Email: [info@sunlinesa.com.au](mailto:info@sunlinesa.com.au)  
Web: [www.sunlineaustralia.com.au](http://www.sunlineaustralia.com.au)

### PERTH

Address: Unit 2, 10 Competition Way, Wangara WA 6065  
Ph: (08) 9303 4347  
Email: [info@sunlinewa.com.au](mailto:info@sunlinewa.com.au)  
Web: [www.sunlineaustralia.com.au](http://www.sunlineaustralia.com.au)

 [sunline\\_australia](#)  [sunline australia](#)  [sunlineaustralia](#)